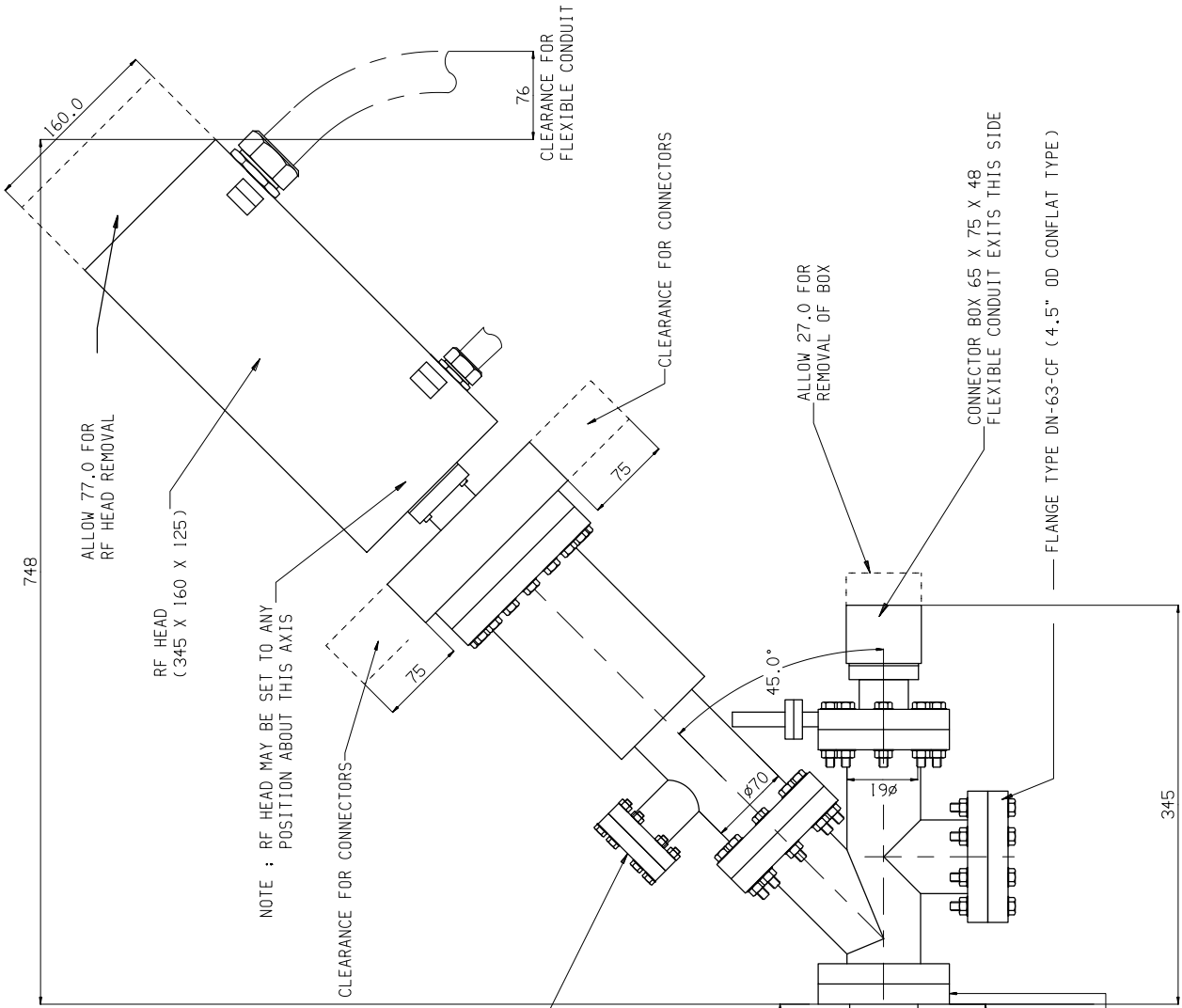
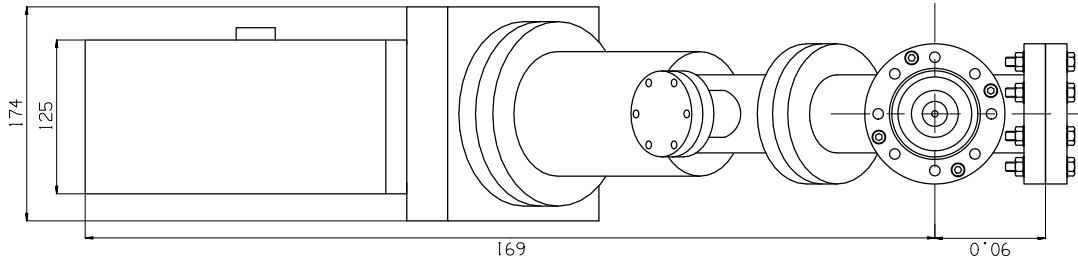


EQS PROBE  
HIGH MASS VERSION  
HIDEN ANALYTICAL LTD



ALLOW 77.0 FOR  
RF HEAD REMOVAL

RF HEAD  
(345 X 160 X 125)

NOTE : RF HEAD MAY BE SET TO ANY  
POSITION ABOUT THIS AXIS

CLEARANCE FOR CONNECTORS

FLANGE TYPE DN-35-CF FIXED  
(2.75" OD CONFLAT TYPE)

CLEARANCE FOR CONNECTORS

ALLOW 27.0 FOR  
REMOVAL OF BOX

CONNECTOR BOX 65 X 75 X 48  
FLEXIBLE CONDUIT EXITS THIS SIDE

FLANGE TYPE DN-63-CF (4.5" OD CONFLAT TYPE)

MOUNTING FLANGE TYPE DN-63-CF FIXED  
WITH CLEARANCE HOLES (4.5" OD CONFLAT TYPE)

MATERIAL : DRG. No. HAA-115-241 iss. A	
PROJECTION : A1	TITLE : EQS PROBE HIGH MASS VERSION
TOLERANCE : +/- UNLESS STATED	SHEET 1 OF 1
DIMENSIONS : mm. UNLESS SPECIFIED	STRICTLY CONFIDENTIAL HIDEN ANALYTICAL LTD. © 2003

J. BELK	ORIGINAL	DATE	SS1
	MODIFICATION		
BT			